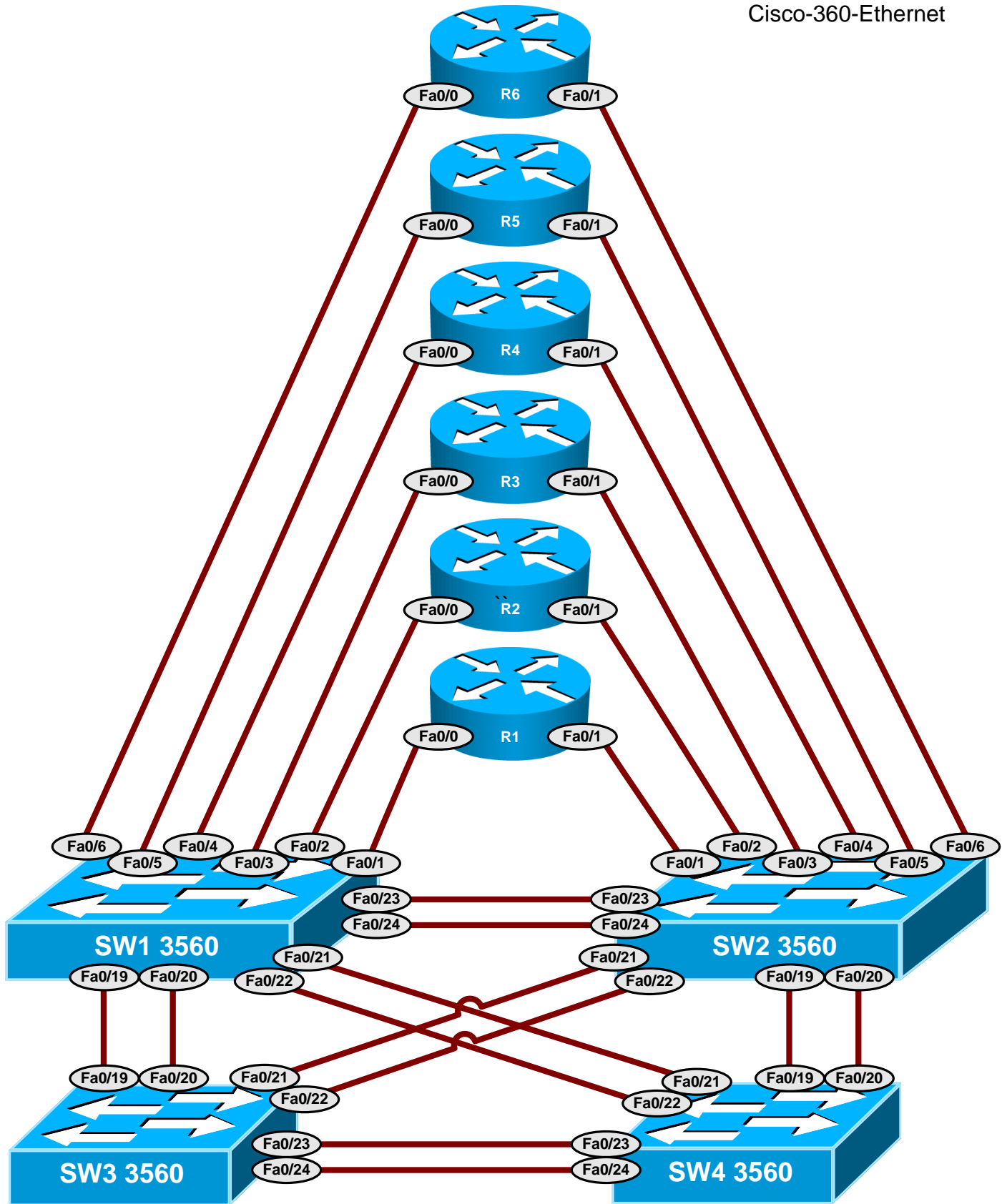
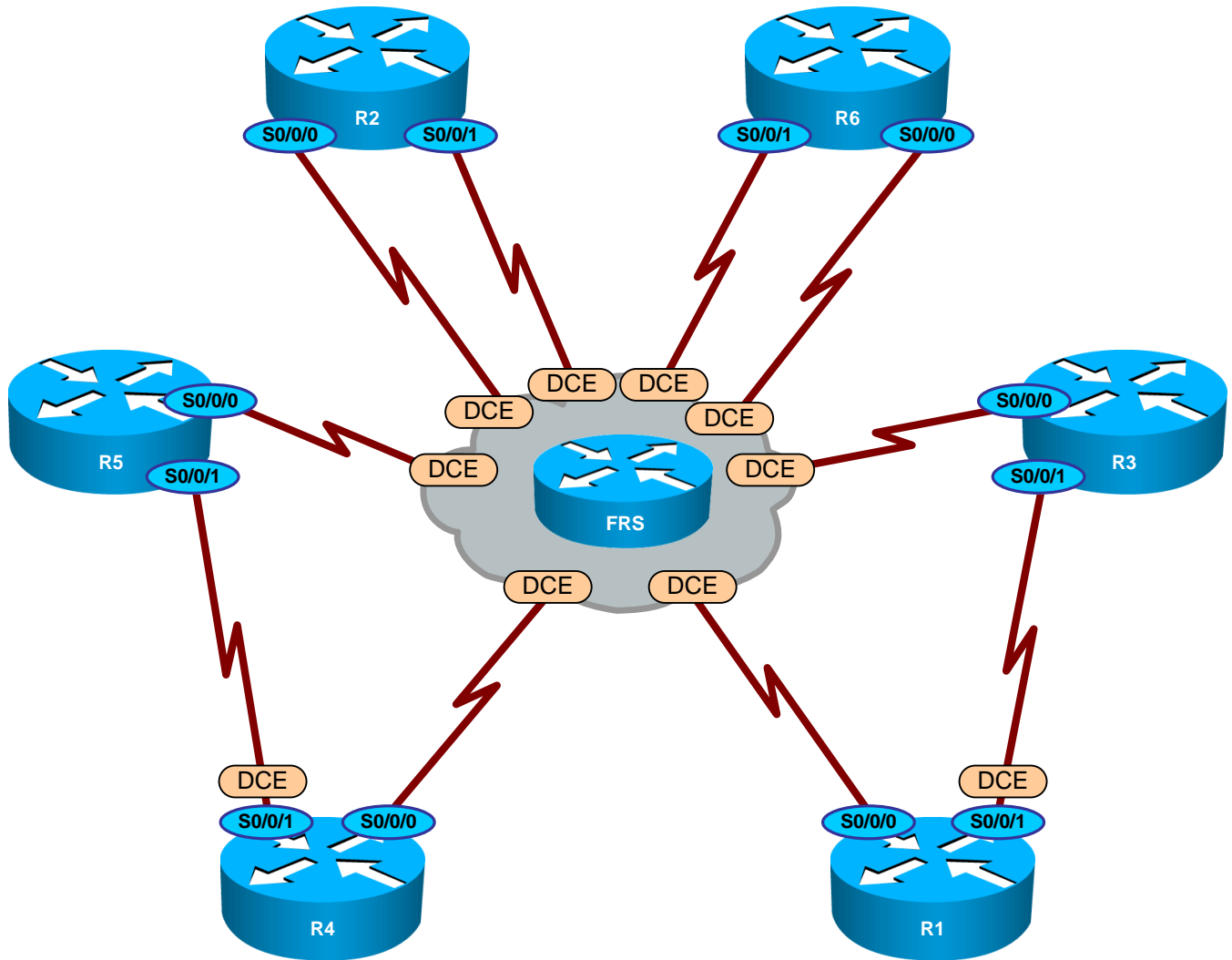


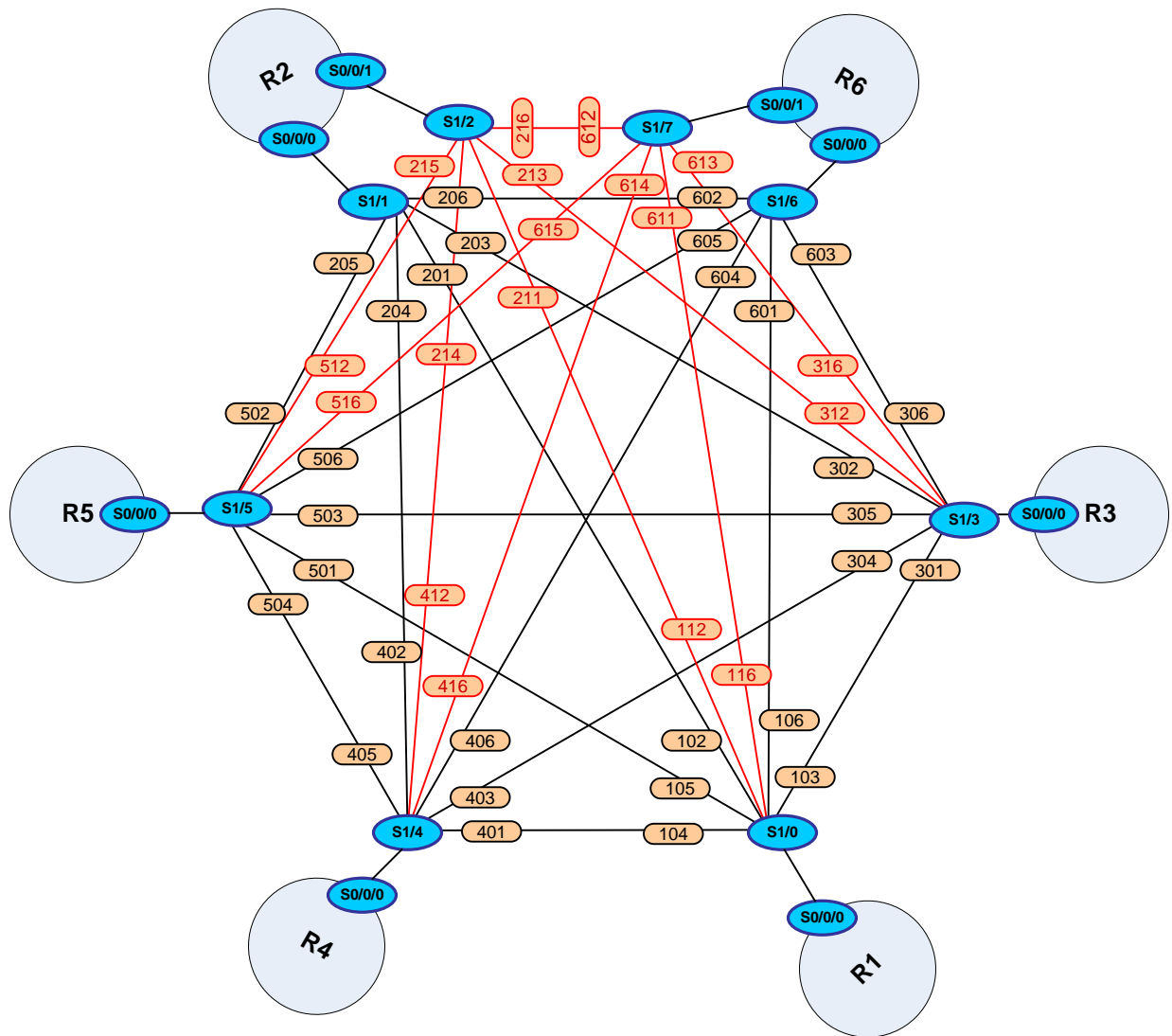
Cisco-360-Ethernet



Cisco-360-Frame-Realy



Cisco-360-Frame-DLCI



Cisco-360-Frame-DLCI-Assn

Frame Relay DLCI assignment

Router	Interface	FRS Interface	DLCI	Connects to
R1	S0/0/0	S1/0	102	R2 S0/0/0
			103	R3 S0/0/0
			104	R4 S0/0/0
			105	R5 S0/0/0
			106	R6 S0/0/0
			112	R2 S0/0/1
			116	R6 S0/0/1
R2	S0/0/0	S1/1	201	R1 S0/0/0
			203	R3 S0/0/0
			204	R4 S0/0/0
			205	R5 S0/0/0
			206	R6 S0/0/0
	S0/0/1	S1/2	211	R1 S0/0/0
			213	R3 S0/0/0
			214	R4 S0/0/0
			215	R5 S0/0/0
			216	R6 S0/0/1
R3	S0/0/0	S1/3	301	R1 S0/0/0
			302	R2 S0/0/0
			304	R4 S0/0/0
			305	R5 S0/0/0
			306	R6 S0/0/0
			312	R2 S0/0/1
			316	R6 S0/0/1
R4	S0/0/0	S1/4	401	R1 S0/0/0
			402	R2 S0/0/0
			403	R3 S0/0/0
			405	R5 S0/0/0
			406	R6 S0/0/0
			412	R2 S0/0/1
			416	R6 S0/0/1
R5	S0/0/0	S1/5	501	R1 S0/0/0
			502	R2 S0/0/0
			503	R3 S0/0/0
			504	R4 S0/0/0
			506	R6 S0/0/0
			512	R2 S0/0/1
			516	R6 S0/0/1
R6	S0/0/0	S1/6	601	R1 S0/0/0
			602	R2 S0/0/0
			603	R3 S0/0/0
			604	R4 S0/0/0
			605	R5 S0/0/0
	S0/0/1	S1/7	611	R1 S0/0/0
			612	R2 S0/0/1
			613	R3 S0/0/0
			614	R4 S0/0/0
			615	R5 S0/0/0

RPC POWER SWITCH

2509>rpc ← Access to Baytech RPC Power Switch

```
RPC-3 Telnet Host
Revision F 4.20a, (C) 1999
Bay Technical Associates
Unit ID: RPC3-20
```

```
Enter username>rpc ← Login to RPC with username "rpc"
Login successful.
```

Selection Number	Outlet Name	Outlet Number	Power Status
1	R1	1	On
2	R2	2	On
3	R3	3	On
4	R4	4	On
5	R5	5	On
6	R6	6	On
7	FRS	7	On
8	CAT1-CAT2	8	On

← Outlet numbers represent hardware to turn reboot, turn on, and turn off.

```
RPC3 Command Summary (F 4.20a).
"n" refers to Selection Number, as displayed in outlet status
LOGOUT      : terminate session
OFF n       : turn off outlet "n", do all for n = 0
ON n        : turn on outlet "n", do all for n = 0
REBOOT n    : cycle power off/on outlet "n", do all for n = 0
RC          : display outlet relay control info
STATUS      : display power status of outlets
HELP        : display this message
CLEAR       : Reset the maximum detected current
CURRENT     : Read the current
TEMP        : Read current temperature
```

Command Examples:

```
off          turn off everything
on           turn on everything
reboot      reboot everything
reboot 3    reboot R3
off 8       turn off CAT1-CAT2
on 2        turn on R2
```

Cisco-360-Console

Host	Line	Description
R1	Line 1	1841
R2	Line 2	1841
R3	Line 3	1841
R4	Line 4	2811
R5	Line 5	2811
R6	Line 6	2811
FRS	Line 7	2610
CAT1	Line 8	3560
CAT2	Line 9	3560
CAT3	Line 10	3560
CAT4	Line 11	3560
RPC	-	Power Control

If you are unable to reverse telnet to a device, you can clear the line connected to the device console with the command:

Translating "r1"

Trying r1 (1.1.1.1, 2001)...

%Connection refused by remote host

2511> clear line 1 (X = line number of device from chart)

For example: clear line 1 clears the line for R1
 clear line 8 clears the line for CAT1
 clear line 9 clears the line for CAT2